

09/08/99

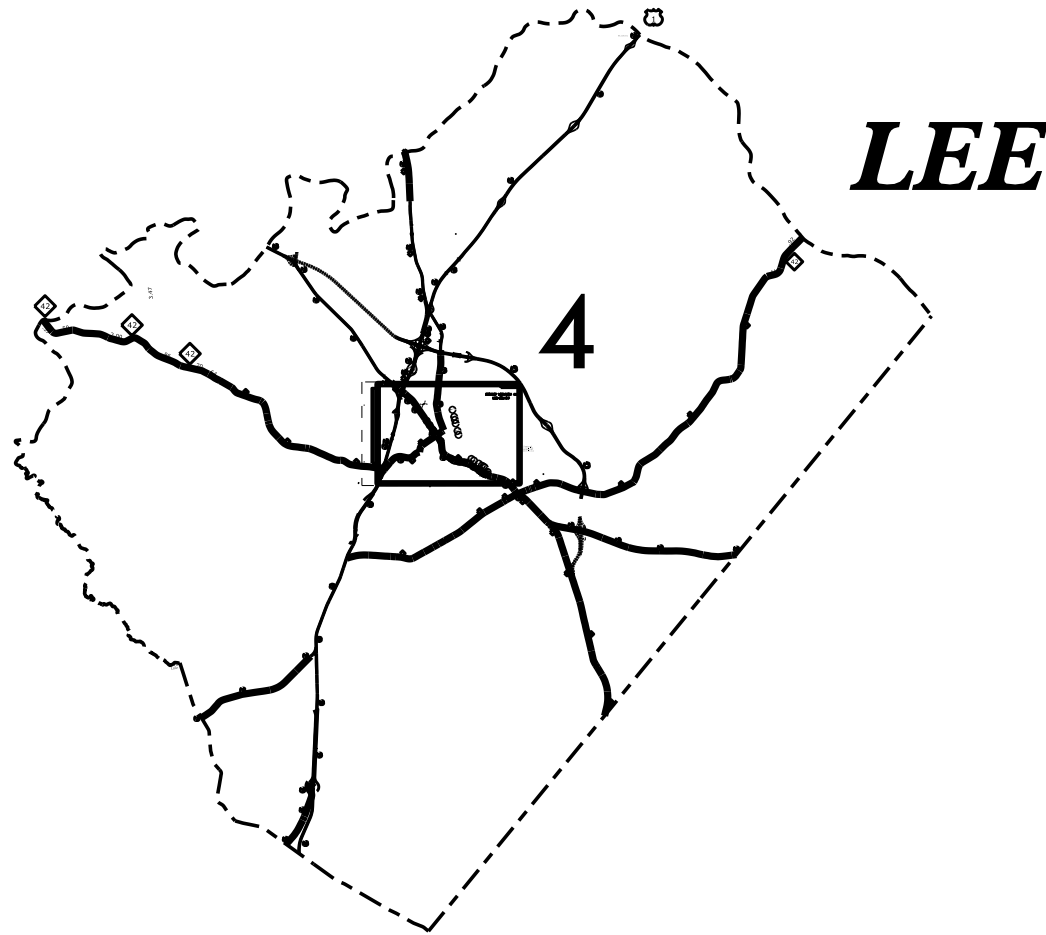
STATE OF NORTH CAROLINA
DIVISION OF HIGHWAYS

LEE COUNTY

LOCATION: SANFORD

TYPE OF WORK: INSTALL CONCRETE CURB RAMPS, CURB & GUTTER, AND SIDEWALK

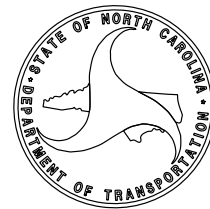
STATE	STATE PROJECT REFERENCE NO.	SHEET NO.	TOTAL SHEETS
N.C.	R-5788HN	1	
STATE PROJ. NO.	F.A. PROJ. NO.	DESCRIPTION	
44918.3.30	TAP-0801(047)	CONST.	



CONTRACT: TIP PROJECTS: R-5788HN

DOCUMENT NOT CONSIDERED FINAL
UNLESS ALL SIGNATURES COMPLETED

GRAPHIC SCALES
NTS



PROJECT LENGTH
VARIOUS INTERSECTIONS

Prepared in the Office of:
DIVISION OF HIGHWAYS
DIVISION 8 - DDC UNIT

2018 STANDARD SPECIFICATIONS

RIGHT OF WAY DATE:
NA

LETTING DATE:
February 27, 2024

HYDRAULICS ENGINEER

SIGNATURE: _____ P.E.

DIVISION DESIGN ENGINEER

SIGNATURE: _____ P.E.

DIVISION DESIGN ENGINEER

31-JAN-2024 10:09
Z:\rdy\moore\R-5788H\HM_ADA_Curb_Ramps\R-5788HN_Lee_Ramps\R-5788HN_1.sh.dgn
mericketts AT DIV08-330084L

PROJECT REFERENCE NO.	SHEET NO.
R-5788HN	1-A

INDEX OF SHEETS

<u>SHEET NUMBER</u>	<u>SHEET</u>
1	TITLE SHEET
1-A	INDEX OF SHEETS
3 THRU 3A	SUMMARY OF QUANTITIES
4	VICINITY MAP
5 THRU 49	PLAN SHEETS

2018 ROADWAY ENGLISH STANDARD DRAWINGS

The following Roadway Standards as appear in "Roadway Standard Drawings" Highway Design Branch – N. C. Department of Transportation – Raleigh, N. C., Dated January 2018 are applicable to this project and by reference hereby are considered a part of these plans:

<u>STD.NO.</u>	<u>TITLE</u>
846.01	CONCRETE CURB, GUTTER, AND CURB & GUTTER
848.01	CONCRETE SIDEWALK
848.05, 848.06	CURB RAMPS

NOTES

ALL CURB RAMP TYPES TO BE CONSTRUCTED AS DIRECTED BY THE ENGINEER.

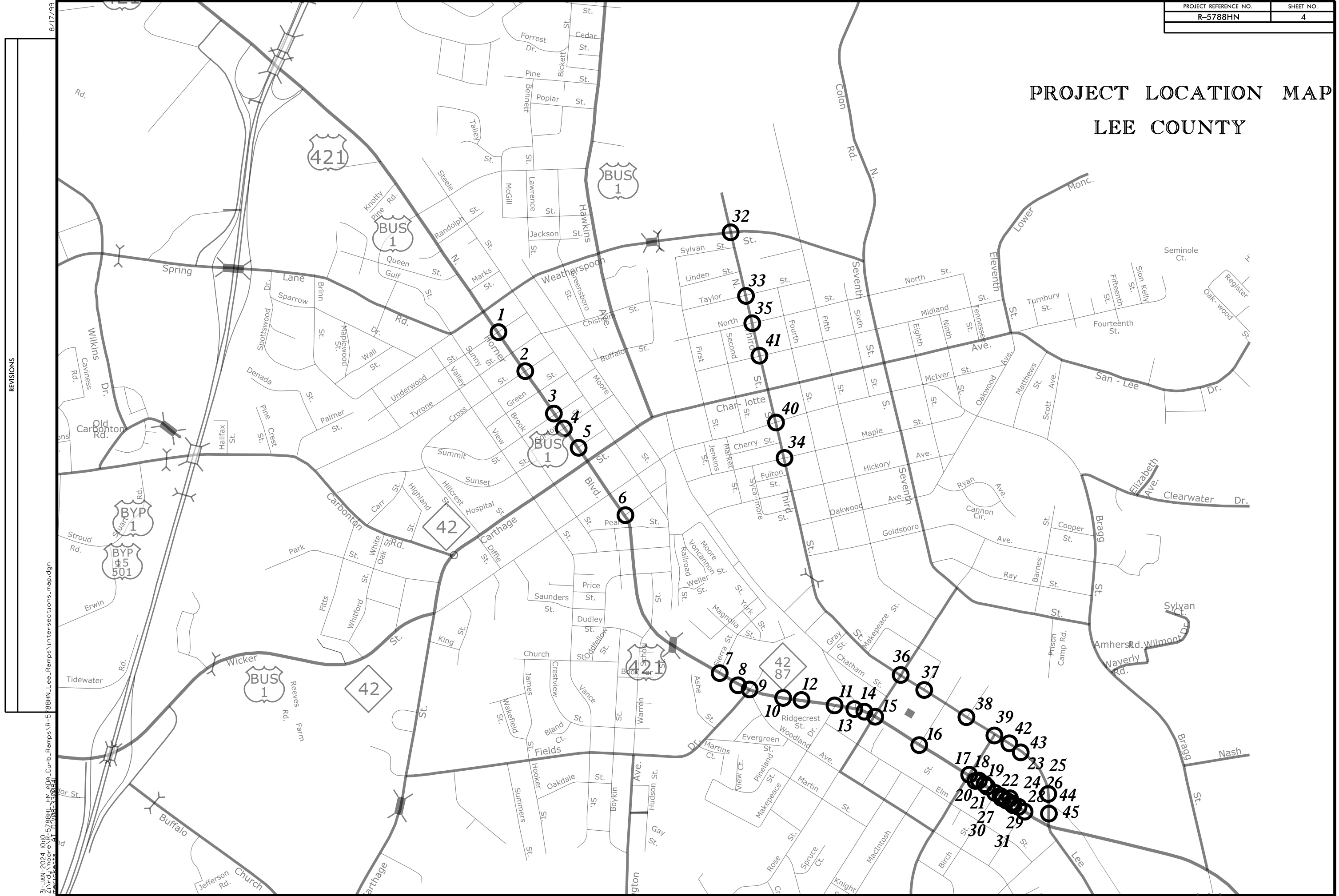
PROJECT NO.	SHEET NO.	TOTAL NO.
44918.3.30 (R-5788HN)	3	

SUMMARY OF QUANTITIES

PROJECT NO	COUNTY	MAP NO	ROUTE	DESCRIPTION	TYP NO	LANES	LANE TYPE	FINAL SURFACE TESTING REQUIRED	WARM MIX ASPHALT REQUIRED	LENGTH	WIDTH	BEGIN MP	END MP	2549000000-E	2591000000-E	2600000000-N	2613000000-N	2738000000-E	2760000000-N	2845000000-N				
														2'-6" CURB & GUTTER	4" CONCRETE SIDEWALK	RETROFIT EXISTING CURB RAMP	REMOVE AND REPLACE CURB RAMPS	GENERIC PAVING ITEM - REMOVE AND REPLACE ASPHALT PAVEMENT	GENERIC PAVING ITEM - REMOVE CURB RAMP	ADJUST METER OR VALVE BOX				
														LF	SY	EA	EA	SY	EA	EA				
44918.3.30 (R-5788HN)	Lee	1	N HORNER BLVD AT BRACKEN ST	SANFORD		2		NO	NO		20	0	0											
TOTAL FOR MAP NO. 1																								
44918.3.30 (R-5788HN)	Lee	2	N HORNER BLVD AT CROSS ST	SANFORD		2		NO	NO		20	0	0											
TOTAL FOR MAP NO. 2																								
44918.3.30 (R-5788HN)	Lee	3	N HORNER BLVD AT SUMMIT DR	SANFORD		2		NO	NO		20	0	0											
TOTAL FOR MAP NO. 3																								
44918.3.30 (R-5788HN)	Lee	4	N HORNER BLVD AT GORDON ST	SANFORD		2		NO	NO		20	0	0											
TOTAL FOR MAP NO. 4																								
44918.3.30 (R-5788HN)	Lee	5	N HORNER BLVD AT ST CLAIR CT	SANFORD		2		NO	NO		20	0	0											
TOTAL FOR MAP NO. 5																								
44918.3.30 (R-5788HN)	Lee	6	S HORNER BLVD AT COLE ST	SANFORD		2		NO	NO		20	0	0											
TOTAL FOR MAP NO. 6																								
44918.3.30 (R-5788HN)	Lee	7	S HORNER BLVD AT KFC	SANFORD		2		NO	NO		20	0	0											
TOTAL FOR MAP NO. 7																								
44918.3.30 (R-5788HN)	Lee	8	S HORNER BLVD AT FASTMED	SANFORD		2		NO	NO		20	0	0											
TOTAL FOR MAP NO. 8																								
44918.3.30 (R-5788HN)	Lee	9	S HORNER BLVD AT FIELDS DR	SANFORD		2		NO	NO		20	0	0											
TOTAL FOR MAP NO. 9																								
44918.3.30 (R-5788HN)	Lee	10	S HORNER BLVD AT DRIVEWAY AT WESTWINDS REALTY AND TOTAL LIFE CARE	SANFORD		2		NO	NO		20	0	0											
TOTAL FOR MAP NO. 10																								
44918.3.30 (R-5788HN)	Lee	11	S HORNER BLVD AT W MAKEPEACE ST	SANFORD		2		NO	NO		20	0	0											
TOTAL FOR MAP NO. 11																								
44918.3.30 (R-5788HN)	Lee	12	S HORNER BLVD AT ENTERPRISE DRIVEWAY	SANFORD		2		NO	NO		20	0	0											
TOTAL FOR MAP NO. 12																								
44918.3.30 (R-5788HN)	Lee	13	S HORNER BLVD AT SHORT STREET	SANFORD		2		NO	NO		20	0	0											
TOTAL FOR MAP NO. 13														15	10	1	3	10.00	1					
44918.3.30 (R-5788HN)	Lee	14	S HORNER BLVD AT WALGREENS EXIT	SANFORD		2		NO	NO		20	0	0											
TOTAL FOR MAP NO. 14														15	10	1	3	10.00	1					
44918.3.30 (R-5788HN)	Lee	15	S HORNER BLVD AT W ROSE ST	SANFORD		2		NO	NO		20	0	0											
TOTAL FOR MAP NO. 15																		10.00						
44918.3.30 (R-5788HN)	Lee	16	S HORNER BLVD AT GARDEN ST	SANFORD		2		NO	NO		20	0	0											
TOTAL FOR MAP NO. 16														20	10		4		2					
44918.3.30 (R-5788HN)	Lee	17	S HORNER BLVD AT COURTLAND DR	SANFORD		2		NO	NO		20	0	0											
TOTAL FOR MAP NO. 17																			6					
44918.3.30 (R-5788HN)	Lee	18	S HORNER BLVD AT NFC ENTRANCE	SANFORD		2		NO	NO		20	0	0											
TOTAL FOR MAP NO. 18																			6					
44918.3.30 (R-5788HN)	Lee	19	S HORNER BLVD AT GROCE REAL ESTATE DRIVEWAY	SANFORD		2		NO	NO		20	0	0											
TOTAL FOR MAP NO. 19																			2					
44918.3.30 (R-5788HN)	Lee	20	S HORNER BLVD AT ATLANTIC TIRE DRIVEWAY	SANFORD		2		NO	NO		20	0	0											
TOTAL FOR MAP NO. 20																			4					
44918.3.30 (R-5788HN)	Lee	21	S HORNER BLVD AT CHIPPERS PAINT/BAIL BONDS	SANFORD		2		NO	NO		20	0	0											
TOTAL FOR MAP NO. 21																			2					
44918.3.30 (R-5788HN)	Lee	22	S HORNER BLVD AT BIRCH ST	SANFORD		2		NO	NO		20	0	0											
TOTAL FOR MAP NO. 22																			2	5.00				
44918.3.30 (R-5788HN)	Lee	23	S HORNER BLVD AT DOMINOS PIZZA	SANFORD		2		NO	NO		20	0	0											
TOTAL FOR MAP NO. 23																			2					
44918.3.30 (R-5788HN)	Lee	24	S HORNER BLVD AT COLONIAL PLAZA	SANFORD		2		NO	NO		20	0	0											
TOTAL FOR MAP NO. 24																			2					
44918.3.30 (R-5788HN)	Lee	25	S HORNER BLVD AT ZHENG GARDEN	SANFORD		2		NO	NO		20	0	0											
TOTAL FOR MAP NO. 25																			2					
44918.3.30 (R-5788HN)	Lee	26	S HORNER BLVD AT BRICK CITY GRILL	SANFORD		2		NO	NO		20	0	0											
TOTAL FOR MAP NO. 26																			4					
44918.3.30 (R-5788HN)	Lee	27	S HORNER BLVD AT LOS AMIGOS	SANFORD		2		NO	NO		20	0	0											
TOTAL FOR MAP NO. 27																			2					
44918.3.30 (R-5788HN)	Lee	28	S HORNER BLVD AT JEFFERSON ST	SANFORD		2		NO	NO		20	0	0											
TOTAL FOR MAP NO. 28																			2	10.00				
44918.3.30 (R-5788HN)	Lee	29	S HORNER BLVD AT SAN FELIPE	SANFORD		2		NO	NO		20	0	0											
TOTAL FOR MAP NO. 29																			4					
44918.3.30 (R-5788HN)	Lee	30	S HORNER BLVD AT JOHNSON AND RIGGS STORE	SANFORD		2		NO	NO		20	0	0											
TOTAL FOR MAP NO. 30																			2					
44918.3.30 (R-5788HN)	Lee	31	S HORNER BLVD AT COACHS GRILL	SANFORD		2		NO	NO		20	0	0											
TOTAL FOR MAP NO. 31																			2					
44918.3.30 (R-5788HN)	Lee	32	SR 1560 (WEATHERSPOON ST) AT SR 1515 (N THIRD ST)	SANFORD		2		NO	NO		20	0	0											
TOTAL FOR MAP NO. 32																				3				
44918.3.30 (R-5788HN)	Lee	33	SR 1515 (N THIRD ST) AT TEMPLE AVE	SANFORD		2		NO	NO		20	0	0											
TOTAL FOR MAP NO. 33																				4				
44918.3.30 (R-5788HN)	Lee	34	SR 1515 (S THIRD ST) AT MAPLE AVE	SANFORD		2		NO	NO		20	0	0											
TOTAL FOR MAP NO. 34																				3				
44918.3.30 (R-5788HN)	Lee	35	SR 1515 (N THIRD ST) AT NORTH AVE	SANFORD		2		NO	NO		20	0	0											
TOTAL FOR MAP NO. 35																				4				
44918.3.30 (R-5788HN)	Lee	36	SR 1515 (S THIRD ST) AT ROSE ST	SANFORD		2		NO	NO		20	0	0											
TOTAL FOR MAP NO. 36																				4				
44918.3.30 (R-5788HN)	Lee	37	SR 1515 (S THIRD ST) AT SPRUCE ST	SANFORD		2		NO	NO		20	0	0											
TOTAL FOR MAP NO. 37																				4				
44918.3.30 (R-5788HN)	Lee	38	SR 1515 (S THIRD ST) AT MCINTOSH ST	SANFORD		2		NO	NO		20	0	0											
TOTAL FOR MAP NO. 38																				6				
44918.3.30 (R-5788HN)	Lee	39	SR 1515 (S THIRD ST) AT SR 1122 (COURTLAND DR)	SANFORD		2		NO	NO		20	0	0											
TOTAL FOR MAP NO. 39																				7				
44918.3.30 (R-5788HN)	Lee	40	SR 1515 (S THIRD ST) AT MCIVER ST	SANFORD		2		NO	NO		20	0	0											
TOTAL FOR MAP NO. 40																				3				
44918.3.30 (R-5788HN)	Lee	41	SR 1515 (N THIRD ST) AT MIDLAND AVE	SANFORD		2		NO	NO		20	0	0											
TOTAL FOR MAP NO. 41																				4				
44918.3.30 (R-5788HN)	Lee	42	SR 1515 (S THIRD ST) AT ENRICHMENT CENTER	SANFORD		2		NO	NO		20	0	0											
TOTAL FOR MAP NO. 42																				4				
44918.3.30 (R-5788HN)	Lee	43	SR 1515 (S THIRD ST) AT VICTOR AND ASSOCIATES	SANFORD		2		NO	NO		20	0	0											
TOTAL FOR MAP NO. 43																				2				
44918.3.30 (R-5788HN)	Lee	44	SR 1515 (S THIRD ST) AT EDWARD JONES	SANFORD		2		NO	NO		20	0	0											
TOTAL FOR MAP NO. 44																				2				
44918.3.30 (R-5788HN)	Lee	45	SR 1515 (S THIRD ST) AT JACKSON HEWITT	SANFORD		2		NO	NO		20	0	0											
TOTAL FOR MAP NO. 45																				2				
TOTAL FOR PROJ NO. 44918.3.30 (R-5788HN)														35	92	28	112	238.00	3	6				
GRAND TOTAL														35	92	28	112	238.00	3	6				

PROJECT LOCATION MAP

LEE COUNTY



REVISIONS

8/17/99
 31-JAN-2024 10:40
 Z:\v\vincore\5788HN-HM-ADA-Cur-b-Ramps\Lee-Ramps\Intersections_map.dgn
 5788HN.dwg
 5788HN.dwg

PROJECT REFERENCE NO.	SHEET NO.
R-5788HN	5
RW SHEET NO.	

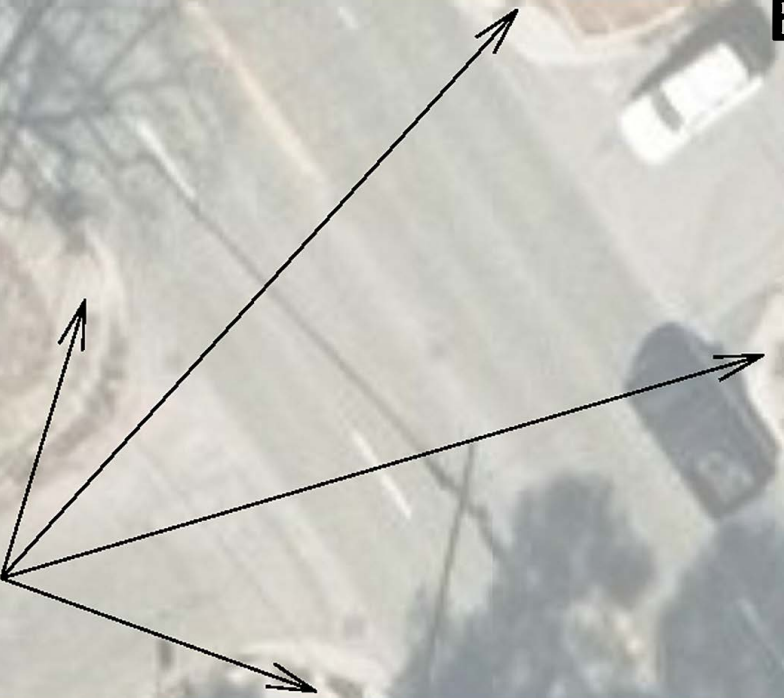
MAP #1



N HORNER BLVD

BRACKEN ST

REMOVE AND REPLACE CURB RAMPS.



REVISIONS

26-OCT-2023 16:57 21-N-dy\vince\165758HL_HV_ADA_Curb_Ramps\Plan\AR-5788HL_HV_maps71-80.dgn
8/17/99

PROJECT REFERENCE NO.	SHEET NO.
R-5788HN	6
RW SHEET NO.	

MAP #2



N HORNER BLVD

CROSS ST

CROSS ST

REMOVE AND REPLACE CURB RAMPS.



REVISIONS

26-OCT-2023 17:00 21-Ndy\meore\st\HW\ADA_Curb_Ramps\Plan\AR-5788HN_HV_maps71-80.dgn
 8/17/99

PROJECT REFERENCE NO.	SHEET NO.
R-5788HN	7
RW SHEET NO.	

MAP #3

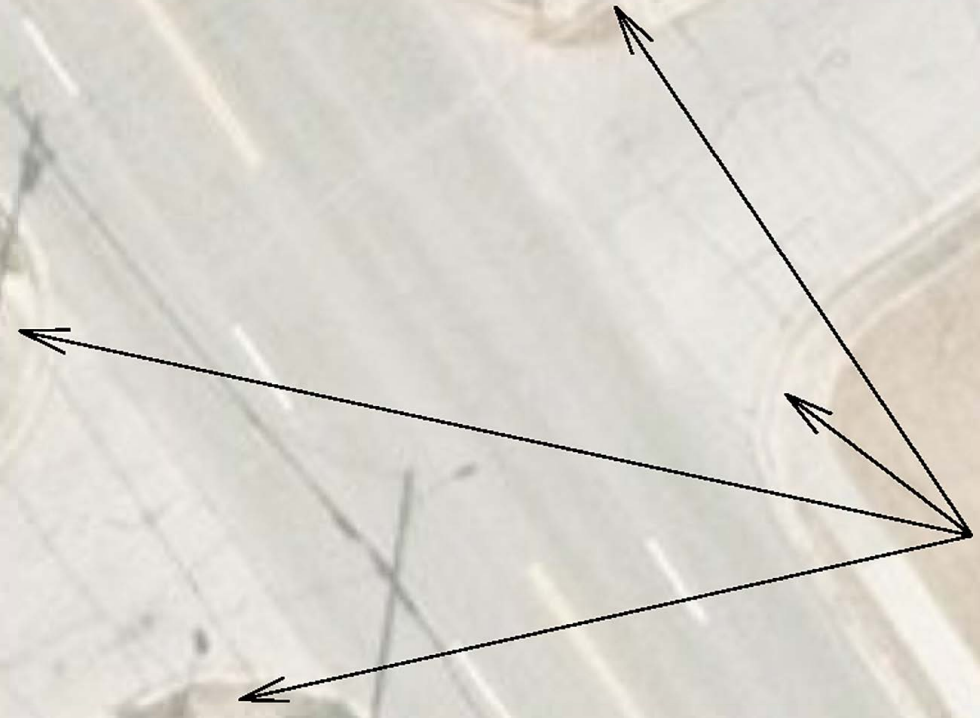


N HORNER BLVD

SUMMIT DR

SUMMIT DR

REMOVE AND REPLACE CURB RAMPS.



REVISIONS

26-OCT-2023 17:02
 Z:\cd\vince\16-5788HN-HM-60A-Curb-Ramps\16-5788HN-HM_maps71-80.dgn
 8/17/99

MAP #4



N HORNER BLVD

GORDON ST

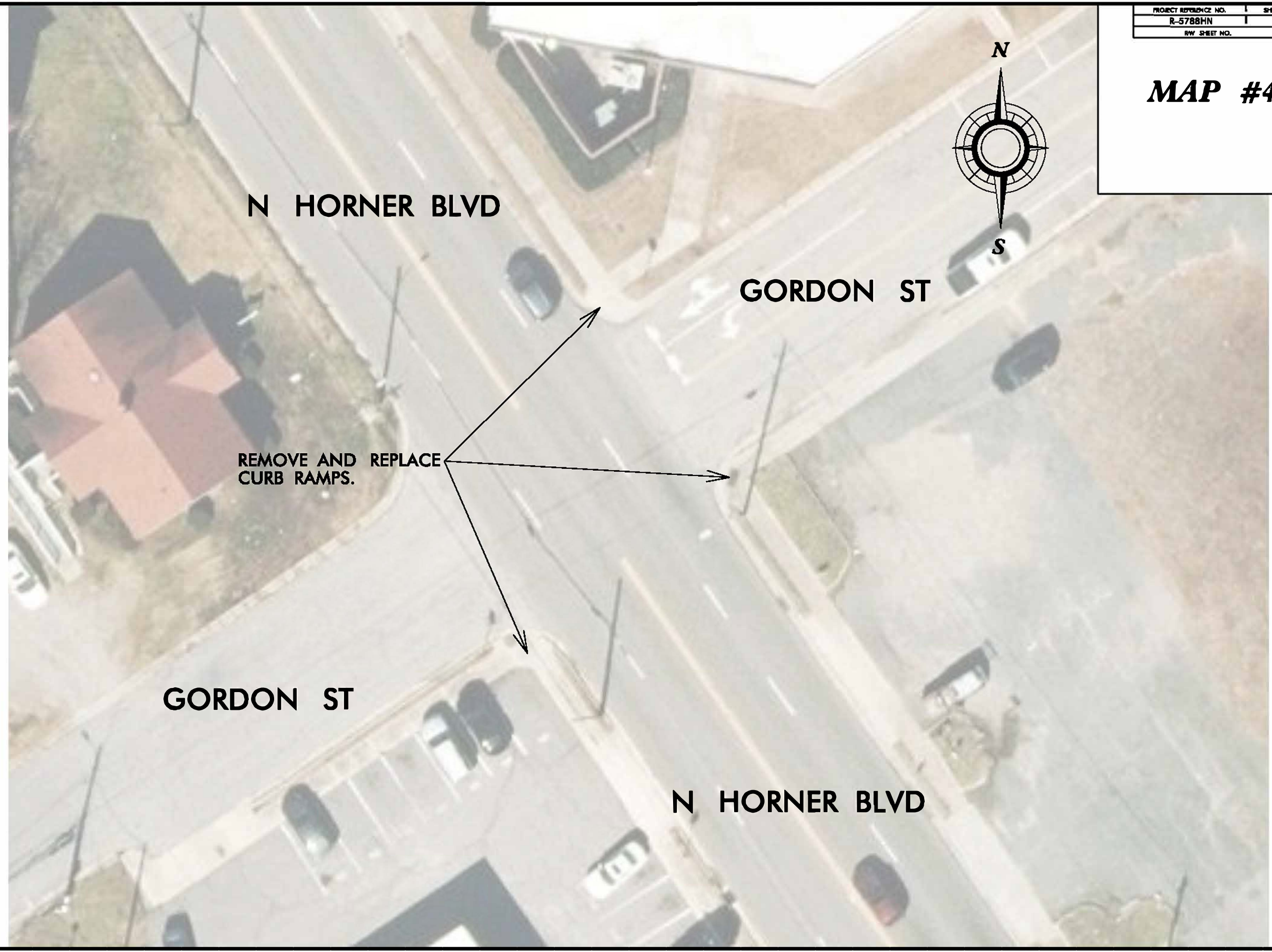
REMOVE AND REPLACE CURB RAMPS.

GORDON ST

N HORNER BLVD

REVISIONS

25-OCT-2023 17:04 21-N-Horner St - RW SHEET NO. 8 - R-5788HN - HW ADA - Curb - Ramps - Plan - R-5788HN - HW - maps71-80.dgn



PROJECT REFERENCE NO.	SHEET NO.
R-5788HN	9
RW SHEET NO.	

MAP #5



ST CLAIR CT

REMOVE AND REPLACE
CURB RAMPS.

N HORNER BLVD

REVISIONS

8/17/99

25-OCT-2023 14:07 [R-5788HN - HW_AOA - Curb_Ramps - Plan] R-5788HN - HW_maps71-80.dgn
25-N-dy-vicore ST HW08-3300851

PROJECT REFERENCE NO.	SHEET NO.
R-5788HN	10
RW SHEET NO.	

MAP #6

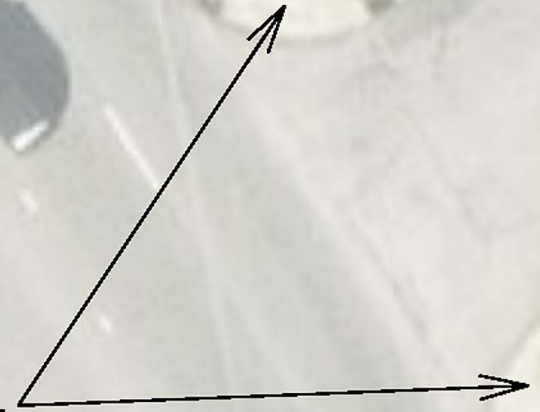


S HORNER BLVD

COLE ST

S HORNER BLVD

REMOVE AND REPLACE CURB RAMPS.



REVISIONS

25-OCT-2023 17:09
21-N-dy-vicore 14-5788HL-HV-ADA-Curb-Ramps-Plan-5788HL-HV-maps71-80.dgn
8/17/99

PROJECT REFERENCE NO.	SHEET NO.
R-5788HN	11
RW SHEET NO.	

MAP #7



Simmons St.

REMOVE AND REPLACE CURB RAMPS.

RETROFIT EXISTING CURB RAMP.

S HORNER BLVD

KFC

REVISIONS

8/17/99

25-OCT-2023 [12:25:57] R-5788HN - HW ADA - Curb - Ramps - Plan & IR - 5788HN - HW - maps71-80.dgn
21-N-dy-vicore ST 11008-330084

PROJECT REFERENCE NO.	SHEET NO.
R-5788HN	12
HW SHEET NO.	

MAP #8



S HORNER BLVD

REMOVE AND REPLACE CURB RAMPS.



FASTMED

REVISIONS

26-OCT-2023 17:14
 21-Ndy\meore\16-5788HL-HW_ADA_Curb_Ramps\16-5788HL-HW_maps71-80.dgn
 8/17/99

PROJECT REFERENCE NO.	SHEET NO.
R-5788HN	13
RW SHEET NO.	

MAP #9



FIELDS DR

S HORNER BLVD

REMOVE AND REPLACE CURB RAMP.

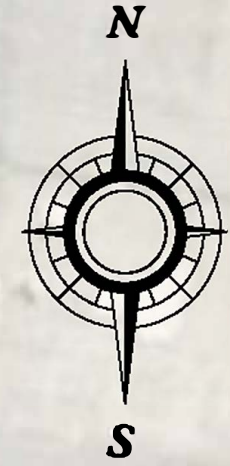
FIELDS DR

WOODLAND AVE

REVISIONS

31-JAN-2024 10:49
 Z:\v-dy\vicore\VR-5788HL-HM-ADA-Curb-Ramps\Plans\VR-5788HL-HM_mats71-80.dgn
 8/17/99

MAP #10



S HORNER BLVD

REMOVE AND REPLACE CURB RAMP.



DRIVEWAY AT WEST WINDS REALTY AND TOTAL LIFE CARE

REVISIONS

26-OCT-2023 17:19
Z:\civ\incore\18-5788HN\HM\60A-Curb_Ramps\18-5788HN\HM_maps71-80.dgn
8/17/23

PROJECT REFERENCE NO.	SHEET NO.
R-5788HN	15
RW SHEET NO.	

MAP #11



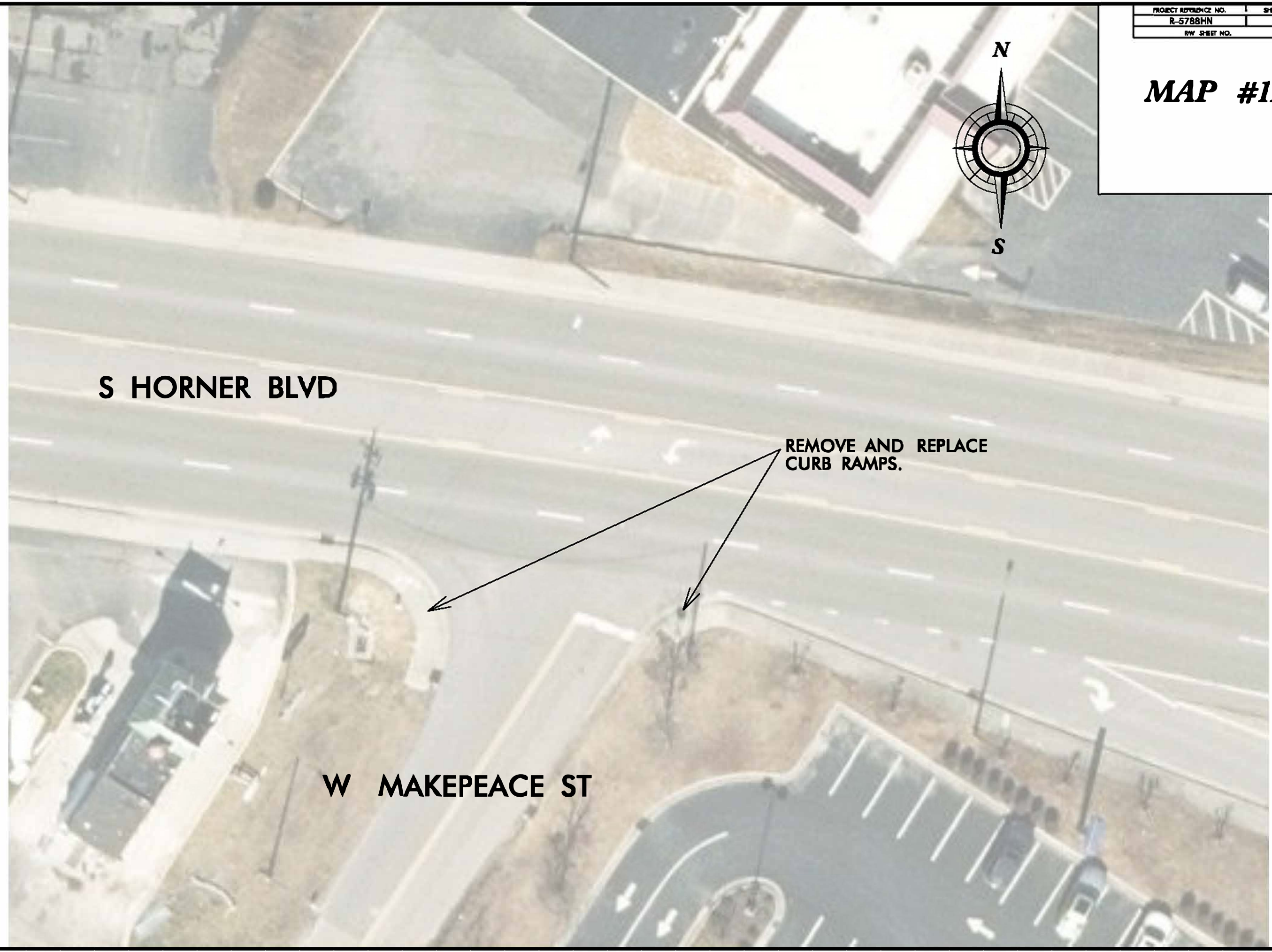
S HORNER BLVD

**REMOVE AND REPLACE
CURB RAMPS.**

W MAKEPEACE ST

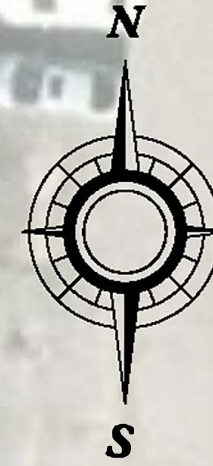
REVISIONS

25-OCT-2023 11:24
21-N-dy-vicore ST MW08-2301041
R-5788HN_HV_ADA_Curb_Ramps_Plan_61R-5788HN_HV_mapsB1-90.dgn
8/17/99



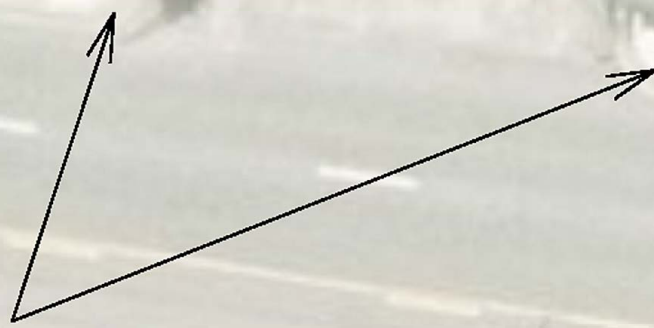
PROJECT REFERENCE NO.	SHEET NO.
R-5788HN	16
RW SHEET NO.	

MAP #12



ENTERPRISE DRIVEWAY

REMOVE AND REPLACE CURB RAMPS.



S HORNER BLVD

REVISIONS

8/17/99

25-OCT-2023 14:27
2:\sdy\mcoore\14-5788HL-HV_ADA_Curb_Ramps\Plan\A\14-5788HL-HV_mapsB1-90.dgn
01 11/08/23 08:51

MAP #13



SHORT STREET

S HORNER BLVD

REMOVE CURB RAMP.

RETROFIT EXISTING CURB RAMP.

REMOVE AND REPLACE CURB RAMPS. REMOVE AND REPLACE ASPHALT AS NEEDED.

REVISIONS

26-OCT-2023 17:29
21-cd\vincore\p\5788HN-HW-ADA-Curb-Ramps\p\5788HN-HW-mapsB1-90.dgn
8/17/99

PROJECT REFERENCE NO.	SHEET NO.
R-5788HN	18
RW SHEET NO.	

MAP #14



S HORNER BLVD

REMOVE AND REPLACE CURB RAMPS.

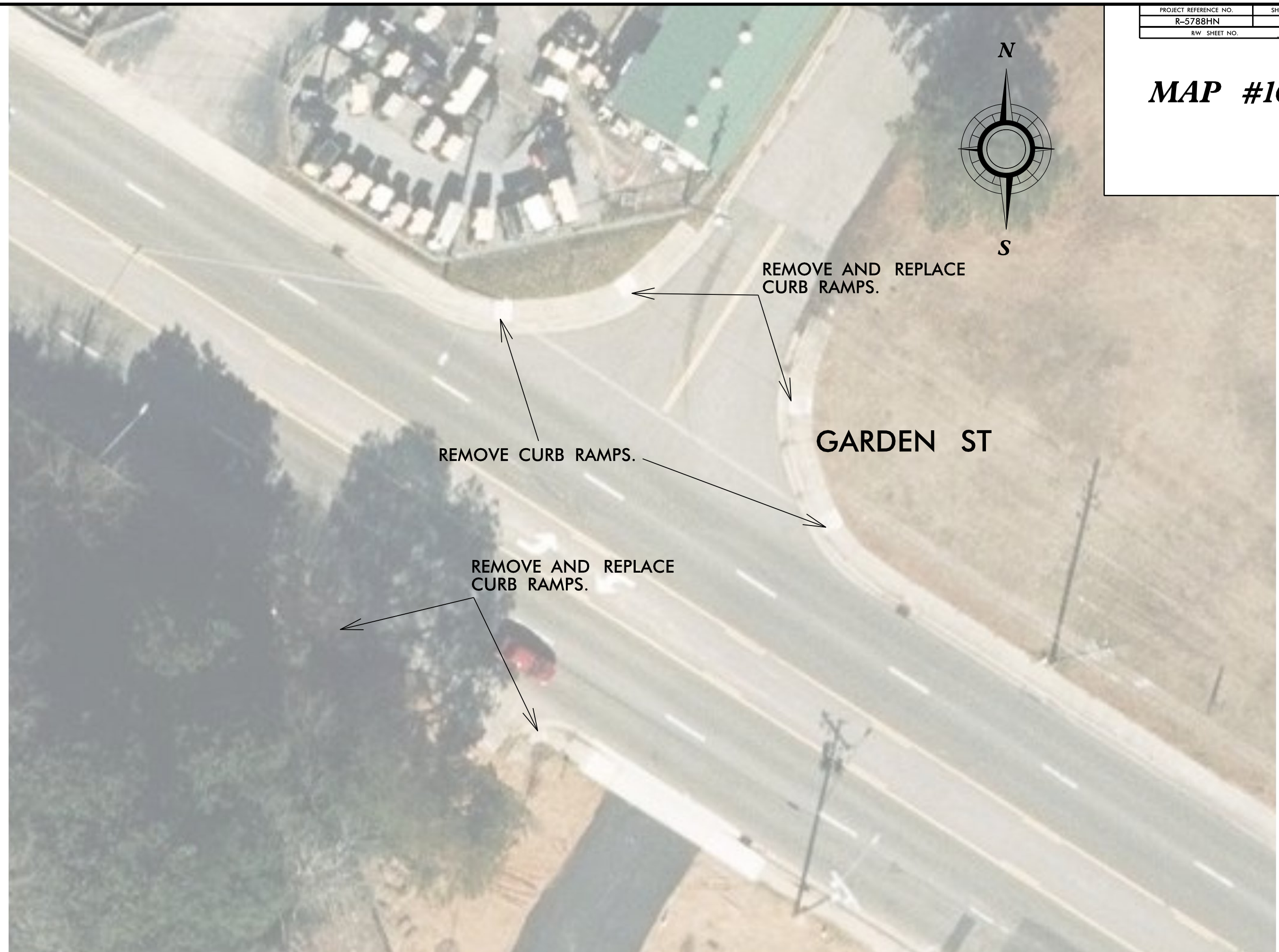
WALGREENS EXIT

REVISIONS

26-OCT-2023 14:31
Z:\ndy\incore\18-5788HL-HM_60A-Curb_Ramps\18-5788HL-HM_maps81-90.dgn
mason@hntb.com

PROJECT REFERENCE NO.	SHEET NO.
R-5788HN	20
RW SHEET NO.	

MAP #16



REMOVE AND REPLACE CURB RAMPS.

GARDEN ST

REMOVE CURB RAMPS.

REMOVE AND REPLACE CURB RAMPS.

REVISIONS

31-JAN-2024 10:50
 Z:\-du\vicore\p\5788HN-HM-ADA-Curb-Ramps\Plans\01-90.dgn
 8/17/99

MAP #17

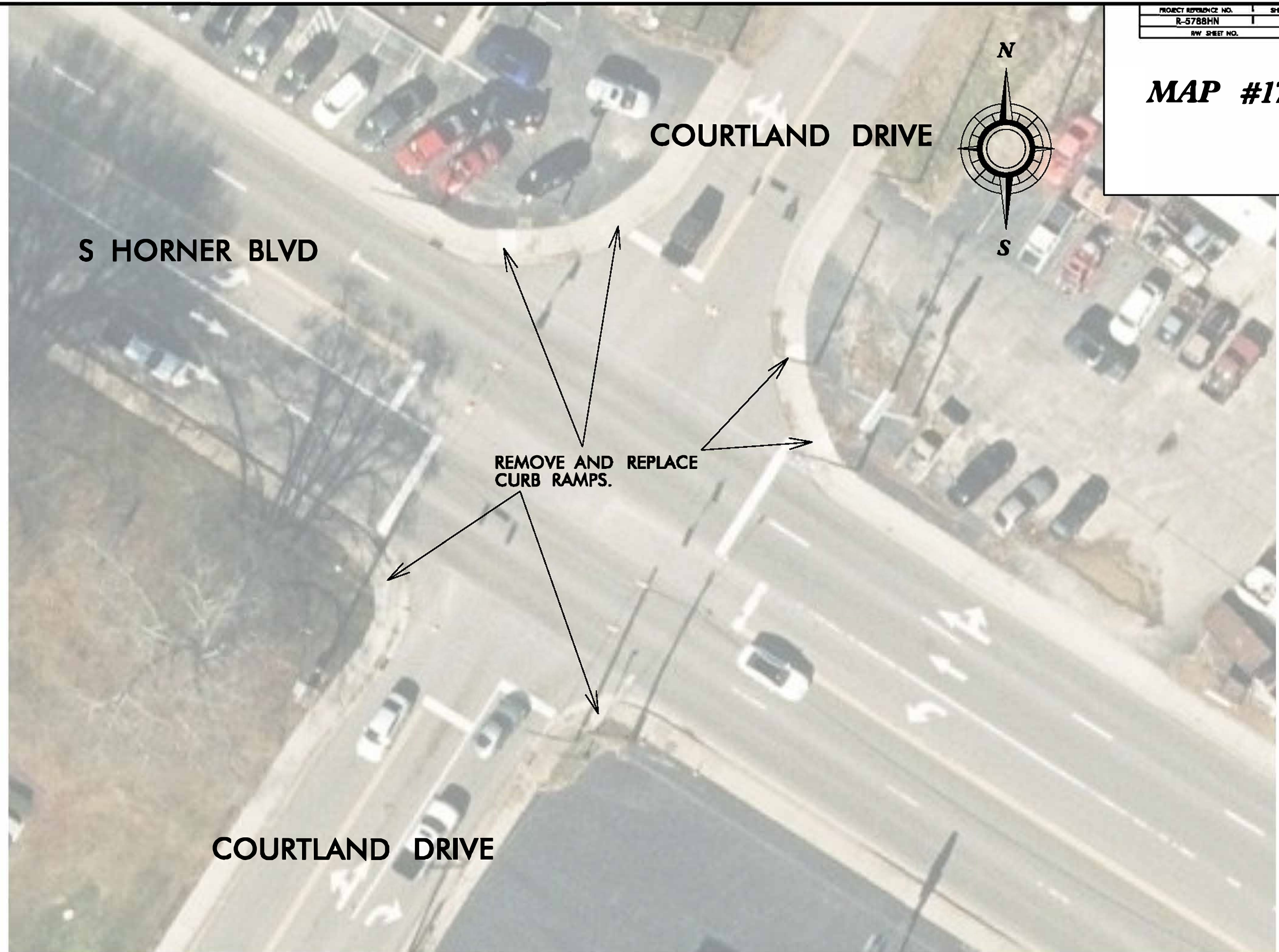


COURTLAND DRIVE

S HORNER BLVD

REMOVE AND REPLACE CURB RAMPS.

COURTLAND DRIVE



REVISIONS

25-OCT-2023 17:38
21-N-dy\nmoore\11-5788HN-HV-ADA-Curb-Ramps-Plan\11-5788HN-HV-maps\1-90.dgn
8/17/99

PROJECT REFERENCE NO.	SHEET NO.
R-5788HN	22
RW SHEET NO.	

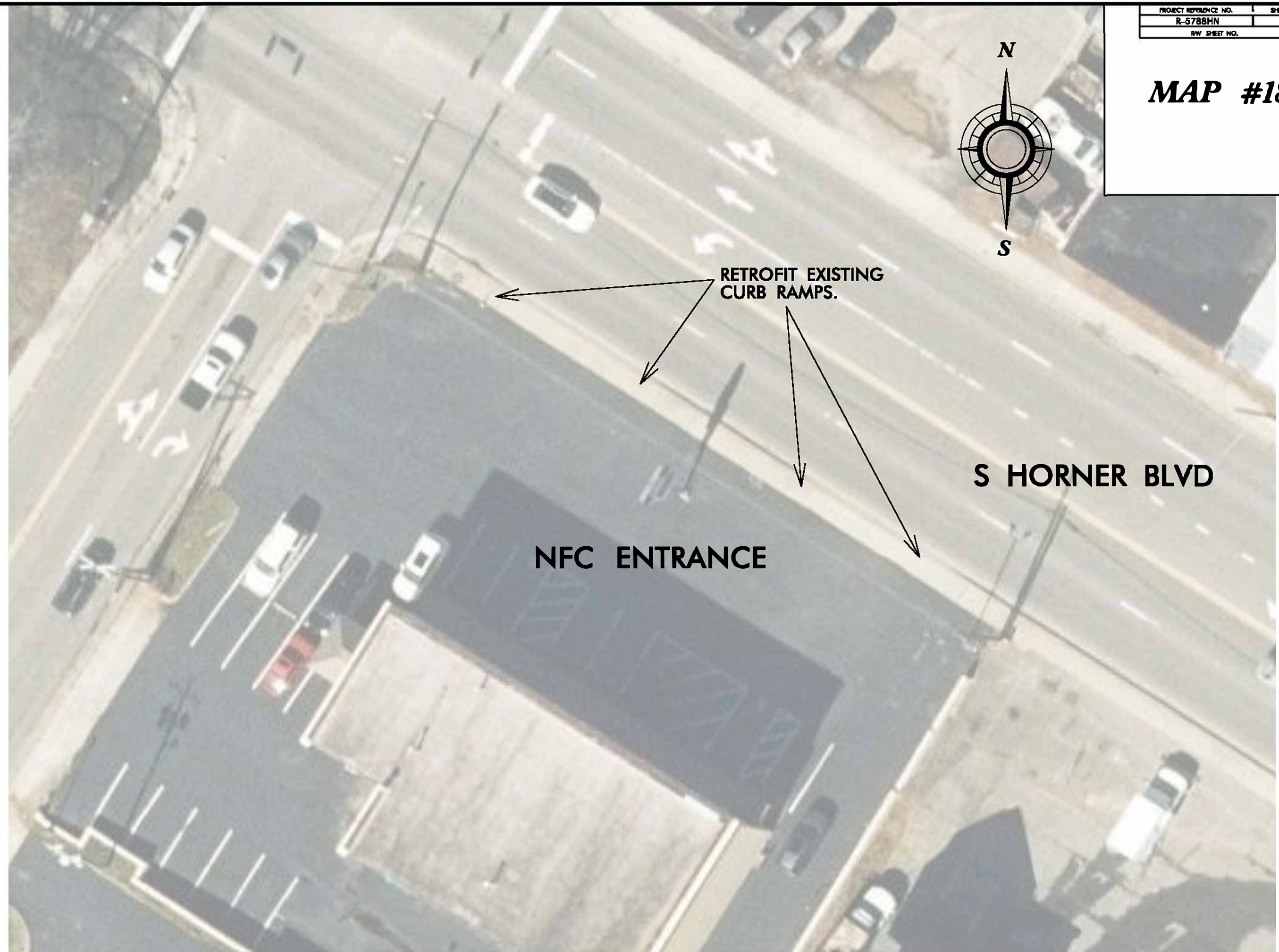
MAP #18



RETROFIT EXISTING CURB RAMPS.

S HORNER BLVD

NFC ENTRANCE



REVISIONS

25-OCT-2023 17:45
21-Ndy_Vicore
R-5788HN_HV_ADA_Curb_Ramps_Plan_S\A\R-5788HN_HV_mapsB1-90.dgn
8/17/99

MAP #19



S HORNER BLVD

RETROFIT EXISTING CURB RAMPS.

GROCE REAL ESTATE DRIVEWAY

REVISIONS

26-OCT-2023 11:43 AM 21-N-dy\meore\18-5788HN-HV_ADA-Curb-Ramps\Plan\A\A-R-5788HN-HV_mapsB1-90.dgn
8/17/99



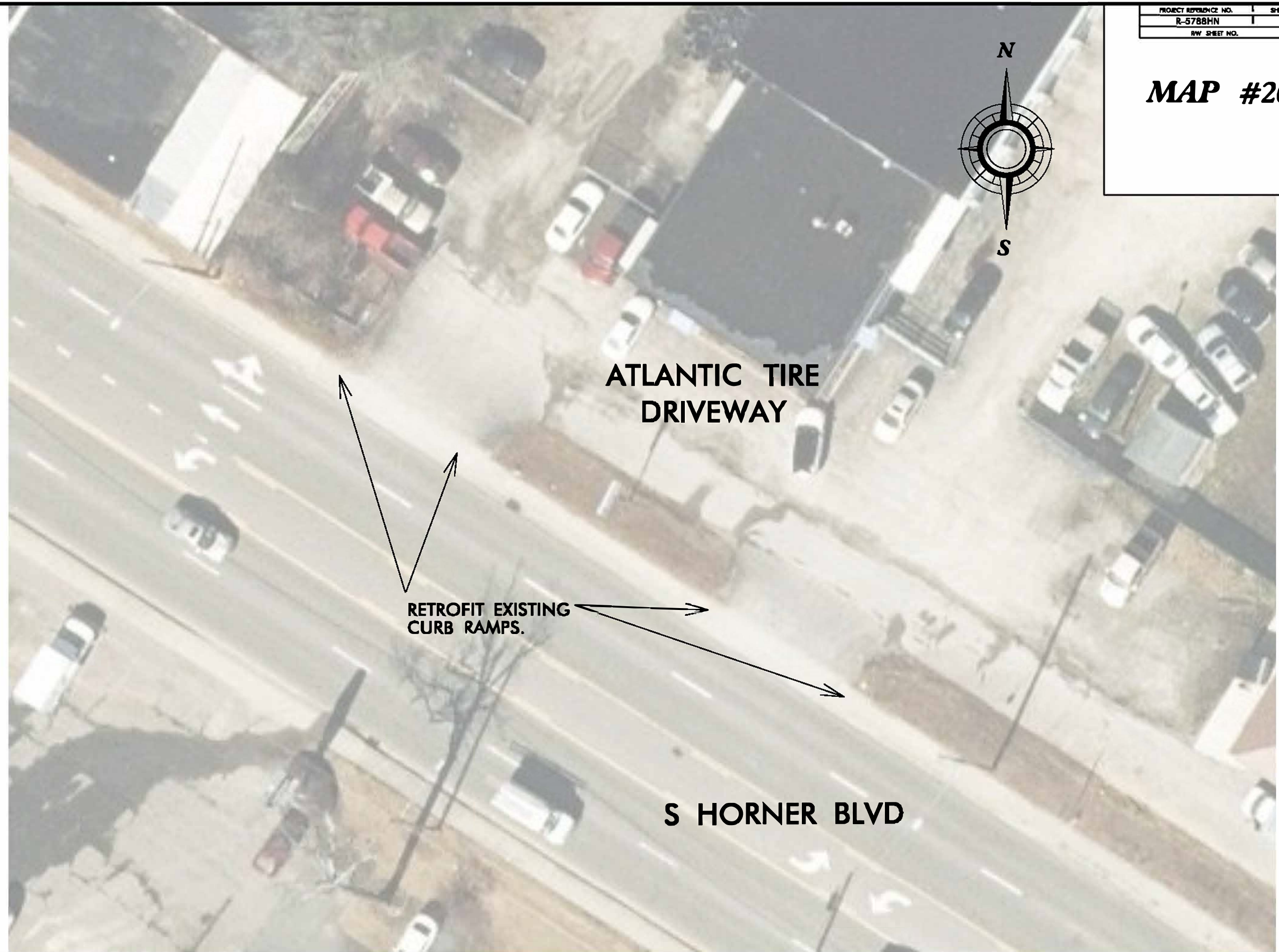
MAP #20



**ATLANTIC TIRE
DRIVEWAY**

**RETROFIT EXISTING
CURB RAMP.**

S HORNER BLVD



REVISIONS

25-OCT-2023 11:46
21-N-dy Moore R-5788HN-HV ADA-Curb-Ramps-Plan-R-5788HN-HV_mapsB1-90.dgn
8/17/99

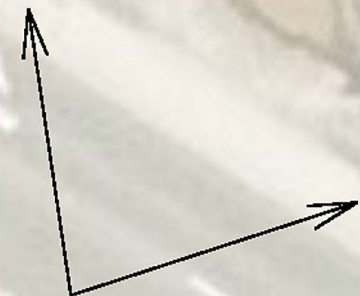
MAP #21



CHIPPERS PAINT/BAIL BONDS

S HORNER BLVD

RETROFIT EXISTING CURB RAMPS.



REVISIONS

26-OCT-2023 17:50 [R-5788HN-HV-ADA-Curb-Ramps-Plan-R-5788HN-HV-maps9]-100.dgn
25-Vy Moore ST 11/08/2023

PROJECT REFERENCE NO.	SHEET NO.
R-5788HN	26
RW SHEET NO.	

MAP #22



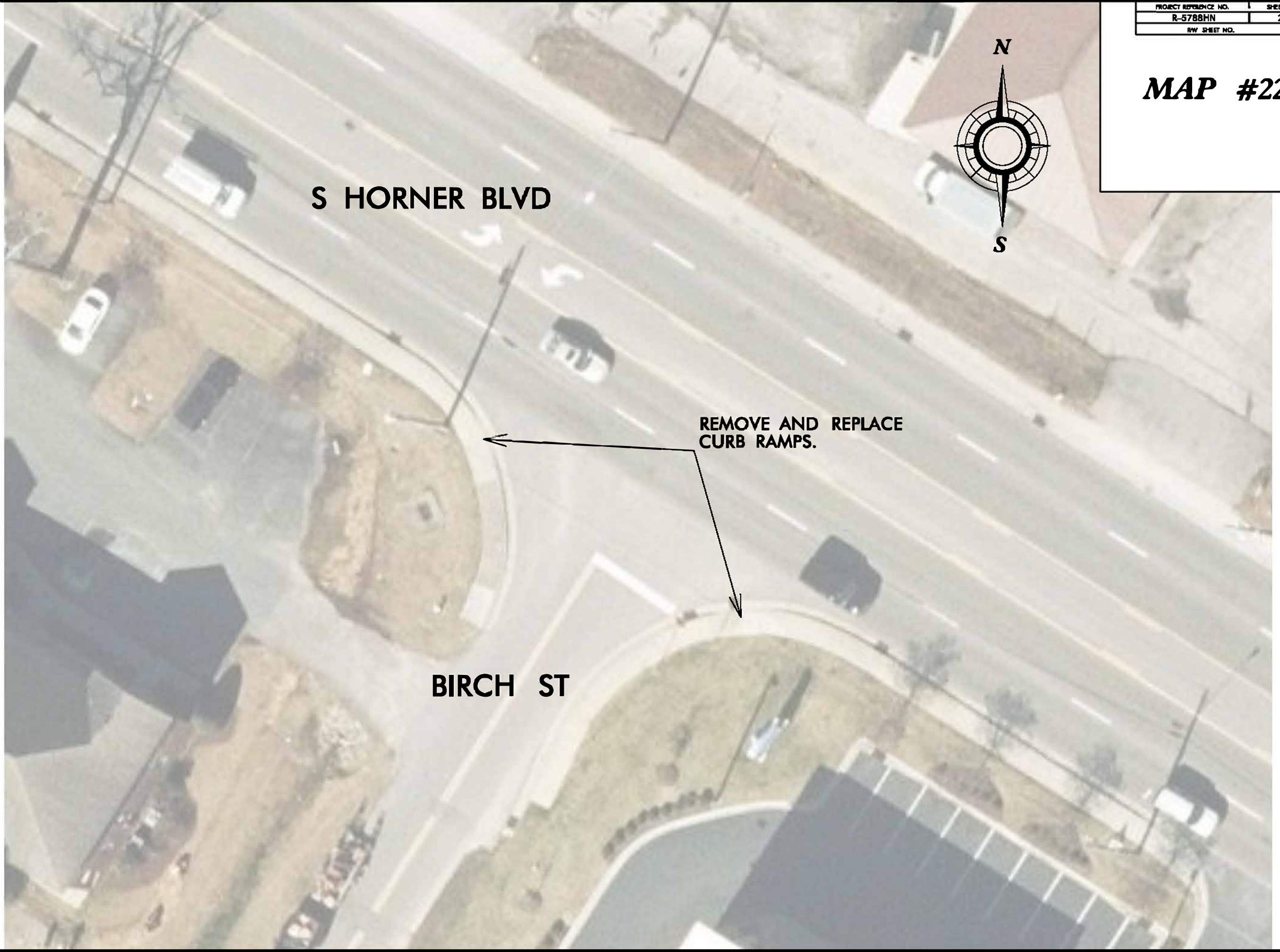
S HORNER BLVD

REMOVE AND REPLACE CURB RAMPS.

BIRCH ST

REVISIONS

26-OCT-2023 14:52
21-N-dy-vicore 145768HL-HV-ADA-Curb-Ramps-Plan-R-5788HL-HV-maps91-100.dgn
8/17/99



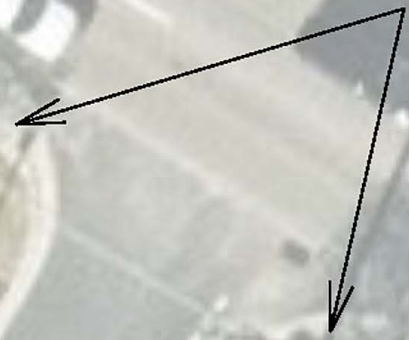
PROJECT REFERENCE NO.	SHEET NO.
R-5788HN	27
RW SHEET NO.	

MAP #23



S HORNER BLVD

REMOVE AND REPLACE
CURB RAMPS.



DOMINOS PIZZA

REVISIONS

26-OCT-2023 14:55
21-c:\vinoone\p\5788HN\HM\60A-Curb-Ramps\Plan\5788HN\HM_maps91-100.dgn
measdel214 At 11/08/23 10:03

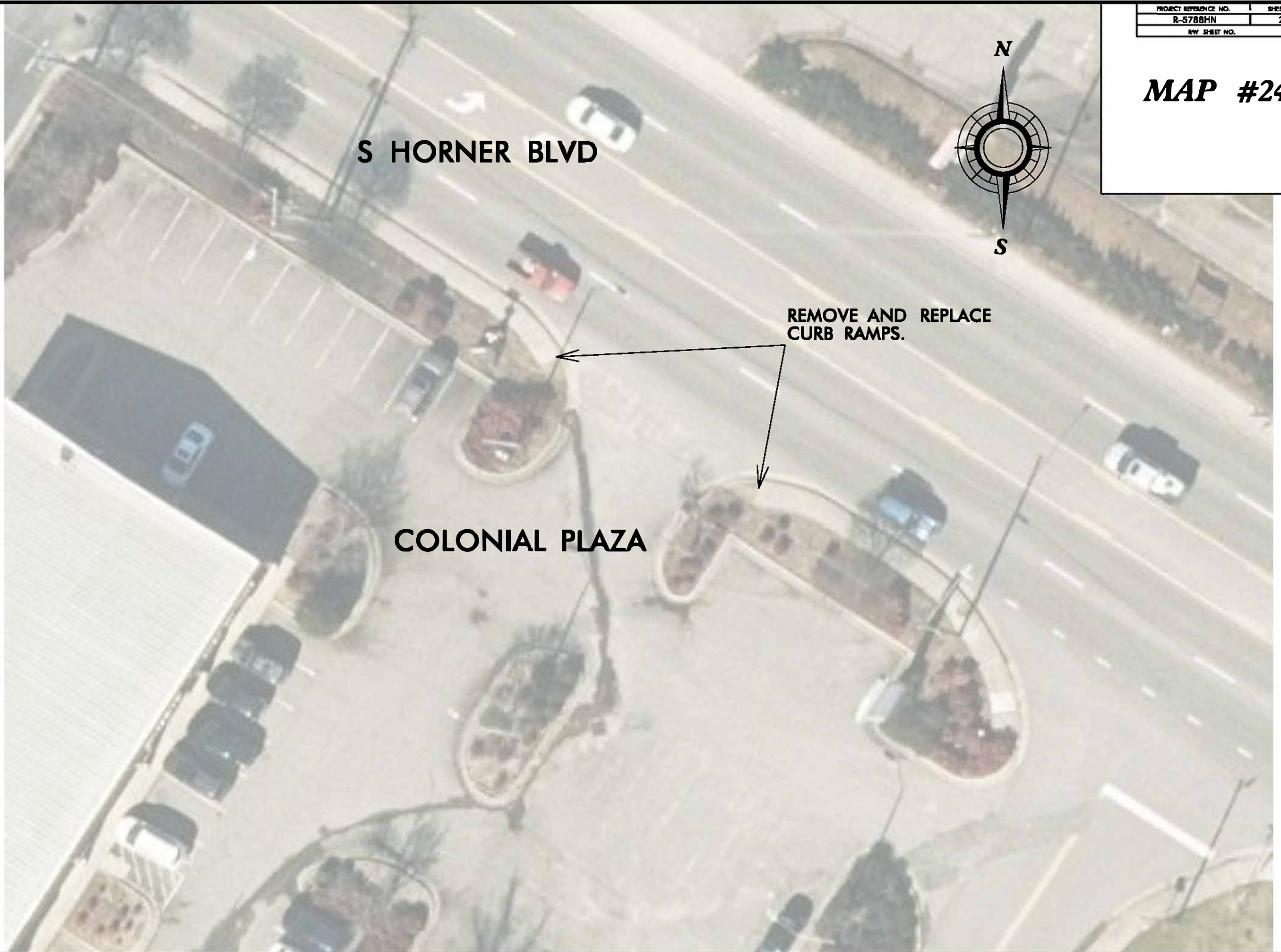
MAP #24



S HORNER BLVD

REMOVE AND REPLACE CURB RAMPS.

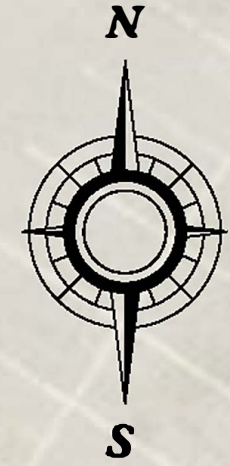
COLONIAL PLAZA



REVISIONS

PROJECT REFERENCE NO.	SHEET NO.
R-5788HN	29
RW SHEET NO.	

MAP #25



ZHENG GARDEN

S HORNER BLVD

RETROFIT EXISTING CURB RAMPS.

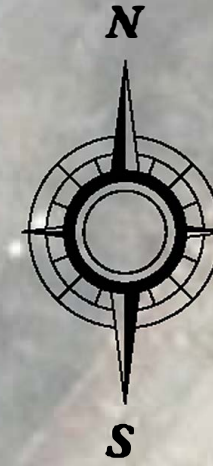


REVISIONS

27-OCT-2023 14:23 2:\nd\vince\125788HL-HV_ADA-Curb-Ramps\Plan\AR-5788HL-HV_maps91-100.dgn
8/17/99

PROJECT REFERENCE NO.	SHEET NO.
R-5788HN	30
RW SHEET NO.	

MAP #26



BRICK CITY GRILL

RETROFIT EXISTING CURB RAMPS.

S HORNER BLVD

REVISIONS

27-OCT-2023 14:27 21-N:\d\vince\18-5788HL-HV-ADA-Curb-Ramps-Plan\18-5788HL-HV-maps\1-100.dgn
8/17/99

PROJECT REFERENCE NO.	SHEET NO.
R-5788HN	31
RW SHEET NO.	

MAP #27



LOS AMIGOS

S HORNER BLVD

RETROFIT EXISTING CURB RAMPS.



REVISIONS

27-OCT-2023 14:31
2:\n-dj\ncore\p\5788HN_HM_ADA_Curb_Ramps\Plan\5788HN_HM_maps91-100.dgn
8/17/99

PROJECT REFERENCE NO.	SHEET NO.
R-5788HN	32
RW SHEET NO.	

MAP #28



S HORNER BLVD

JEFFERSON ST

REMOVE AND REPLACE CURB RAMPS.



REVISIONS

27-OCT-2023 13:34
Z:\cd\vincor\p\5788HN_HM_60A_Curb_Ramps\Plan\5788HN_HM_maps91-100.dgn
8/17/99

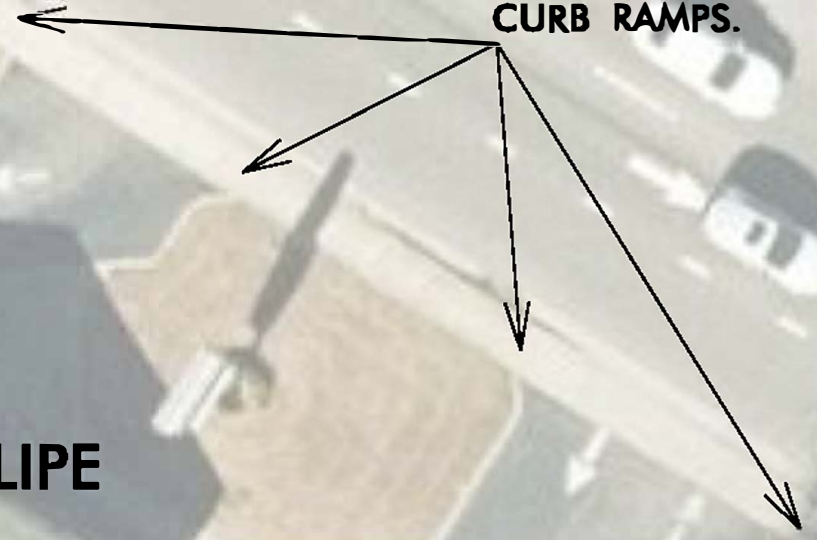
MAP #29



S HORNER BLVD

RETROFIT EXISTING CURB RAMPS.

SAN FELIPE



REVISIONS

27-OCT-2023 14:27
Z:\rdy\vicore\18-5788HL-HM-60A-Curb-Ramps\18-5788HL-HM_maps91-100.dgn
At 11/08/2023 10:08:51

MAP #30



S HORNER BLVD

REMOVE AND REPLACE CURB RAMPS.



JOHNSON AND RIGGS STORE

REVISIONS

27-OCT-2023 14:29
Z:\cody\vince\5788HN\HM\60A-Curb-Ramps\1\Map 30\Map 30.dgn
8/17/99

PROJECT REFERENCE NO.	SHEET NO.
R-5788HN	35
RW SHEET NO.	

MAP #31



COACHS GRILL

RETROFIT EXISTING CURB RAMPS.

S HORNER BLVD



REVISIONS

27-OCT-2023 14:35
2:\n-dj\nvncore\1-5788HN-HV_ADA_Curb_Ramps\1-5788HN-HV_maps\01-110.dgn
31 11/08/23 3:00PM

MAP #32



SR 1515
THIRD ST

SR 1560
WEATHERSPOON ST

REMOVE AND REPLACE
CURB RAMPS.

SR 1515
THIRD ST

REVISIONS

27-OCT-2023 14:38
Z:\civ\incore\p\5788HN\HW_60A_Curb_Ramps\Plan\5788HN\HW_maps\01-110.dgn
8/17/99

PROJECT REFERENCE NO.	SHEET NO.
R-5788HN	37
HW SHEET NO.	

MAP #33



**SR 1515
N THIRD ST**

TEMPLE AVE

**REMOVE AND REPLACE
CURB RAMPS.**

**SR 1515
N THIRD ST**

REVISIONS

27-OCT-2023 14:40
Z:\civ\incore\5788HN\HW\60A-Curb_Ramps\Plan\5788HN\HW\maps101-110.dgn
8/17/99

PROJECT REFERENCE NO.	SHEET NO.
R-5788HN	38
RW SHEET NO.	

MAP #34



**SR 1515
S THIRD ST**

MAPLE AVE

MAPLE AVE

**REMOVE AND REPLACE
CURB RAMP.**

**SR 1515
S THIRD ST**

REVISIONS

27-OCT-2023 14:42
Z:\civ\incore\18-5788HL-HW_60A-Curb-Ramps\18-5788HL-HW_maps\101-110.dgn
8/17/99

PROJECT REFERENCE NO.	SHEET NO.
R-5788HN	39
RW SHEET NO.	

MAP #35



SR 1515
N THIRD ST

NORTH AVE

NORTH AVE

REMOVE AND REPLACE
CURB RAMPS.

SR 1515
N THIRD ST

REVISIONS

27-OCT-2023 14:47 2:\nd\vince\p\5788HN_HV_ADA_Curb_Ramps\Plan\5788HN_HV_maps101-110.dgn
8/17/99

PROJECT REFERENCE NO.	SHEET NO.
R-5788HN	40
RW SHEET NO.	

MAP #36



SR 1515
S THIRD ST

ROSE ST

REMOVE AND REPLACE
CURB RAMPS.

SR 1515
S THIRD ST

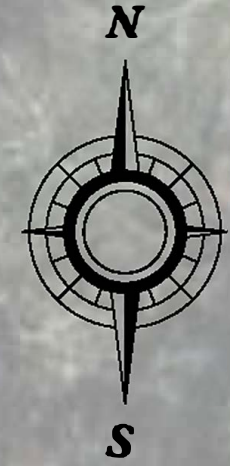
ROSE ST

REVISIONS

27-OCT-2023 14:50
Z:\cody\incore\p\5788HN\HW_60A-Curb_Ramps\Plan\5788HN\HW_maps\01-110.dgn
At: 11/08/2023 10:05:11 AM

PROJECT REFERENCE NO.	SHEET NO.
R-5788HN	41
RW SHEET NO.	

MAP #37



**SR 1515
S THIRD ST**

SPRUCE ST

**REMOVE AND REPLACE
CURB RAMPS.**

**SR 1515
S THIRD ST**

REVISIONS

27-OCT-2023 14:52
Z:\rdy\vicore\18-5788HL-HM-ADA-Curb-Ramps\18-5788HL-HM_maps\101-110.dgn
At 11/08/23 10:05:11

PROJECT REFERENCE NO.	SHEET NO.
R-5788HN	42
RW SHEET NO.	

MAP #38



SR 1515
S THIRD ST

MCINTOSH ST

REMOVE AND REPLACE
CURB RAMPS.

SR 1515
S THIRD ST

REVISIONS

27-OCT-2023 14:55
Z:\rdy\vicore\18-5788HL-HM-ADA-Curb-Ramps\18-5788HL-HM_maps101-110.dgn
AT 11/08/23 2:04:51

MAP #39



SR 1515
S THIRD ST

REMOVE AND REPLACE
CURB RAMPS.

SR 1122
COURTLAND DR

SR 1515
S THIRD ST

REVISIONS

27-OCT-2023 10:00 AM
Z:\cody\incore\p\5788HN\HW_60A-Curb_Ramps\Plan\5788HN\HW_maps\01-110.dgn
AT: 11/08/2023

PROJECT REFERENCE NO.	SHEET NO.
R-5788HN	45
RW SHEET NO.	

MAP #41



**SR 1515
N THIRD ST**

MIDLAND AVE

MIDLAND AVE

**REMOVE AND REPLACE
CURB RAMPS.**

**SR 1515
N THIRD ST**

REVISIONS

8/17/99

27-OCT-2023 10:08
Z:\City\incore\R-5788HN-HW-ADA-Curb-Ramps\Plan\A\R-5788HN-HW_maps111-120.dgn
meas@ctt.com

MAP #42



SR 1515
S THIRD ST

ENRICHMENT CENTER

REMOVE AND
CURB RAMPS.

REPLACE

SR 1515
S THIRD ST

REVISIONS

27-OCT-2023 15:42
Z:\ndy\incore\18-5788HN\18-5788HN-00A-Curb-Ramps\Plan\18-5788HN-HW-maps11-120.dgn
09/12/2023 10:11:54 AM

PROJECT REFERENCE NO.	SHEET NO.
R-5788HN	47
RW SHEET NO.	

MAP #43



SR 1515
S THIRD ST

REMOVE AND REPLACE
CURB RAMPS.



SR 1515
S THIRD ST

VICTOR AND ASSOCIATES

REVISIONS

27-OCT-2023 10:45
Z:\cody\vince\AR-5788HL-HM-ADA-Curb-Ramps\Plan\AR-5788HL-HM_maps111-120.dgn
mason@victor.com

MAP #45



SR 1515
S THIRD ST

REMOVE AND REPLACE
CURB RAMPS.

JACKSON HEWITT

SR 1515
S THIRD ST

REVISIONS

27-OCT-2023 15:50
Z:\d\vince\15-5788HL-HV-ADA-Curb-Ramps\Plan\5788HL-HV-maps11-120.dgn
8/17/99